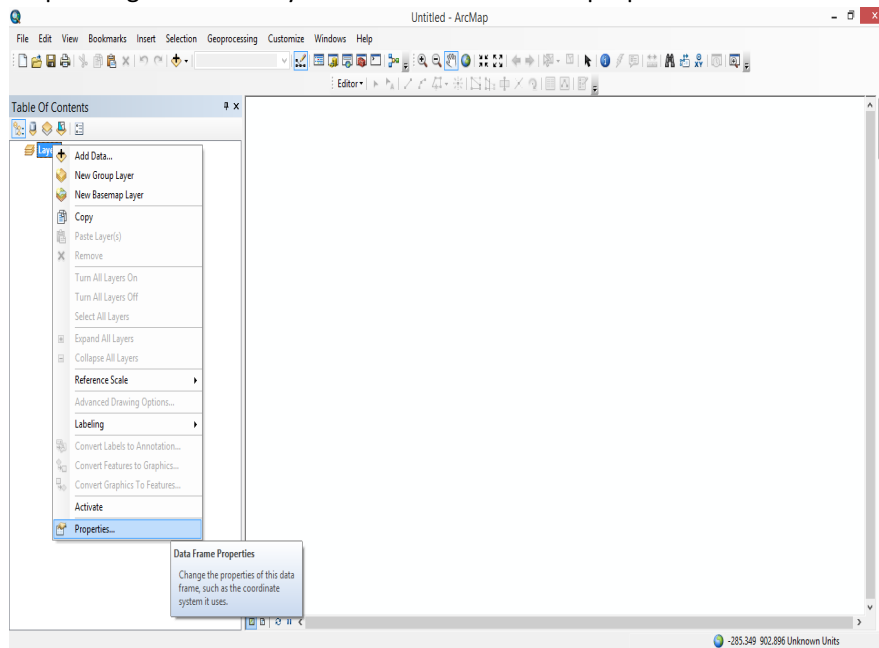
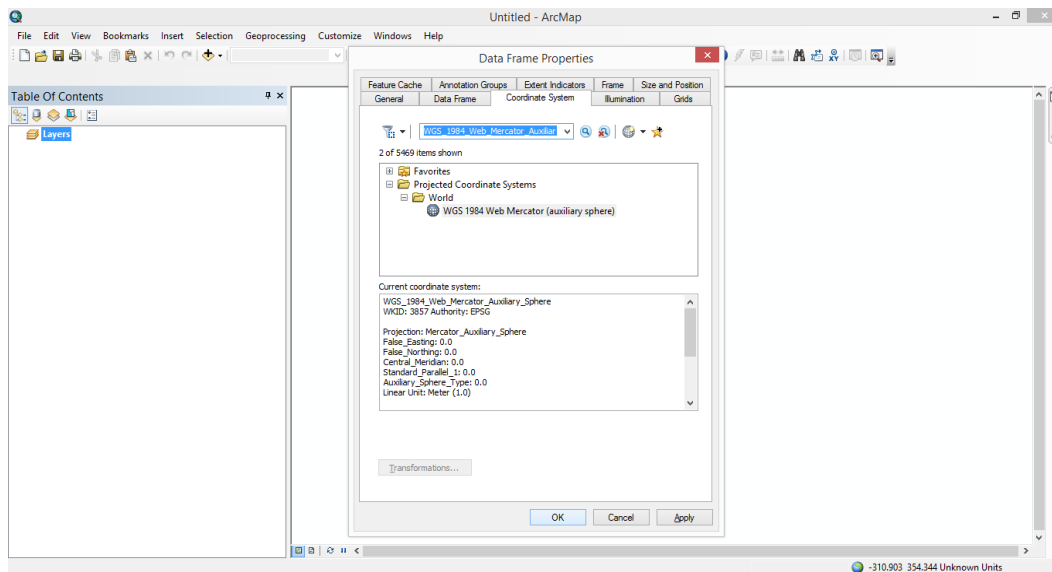


Add WMS Service on ArcMap

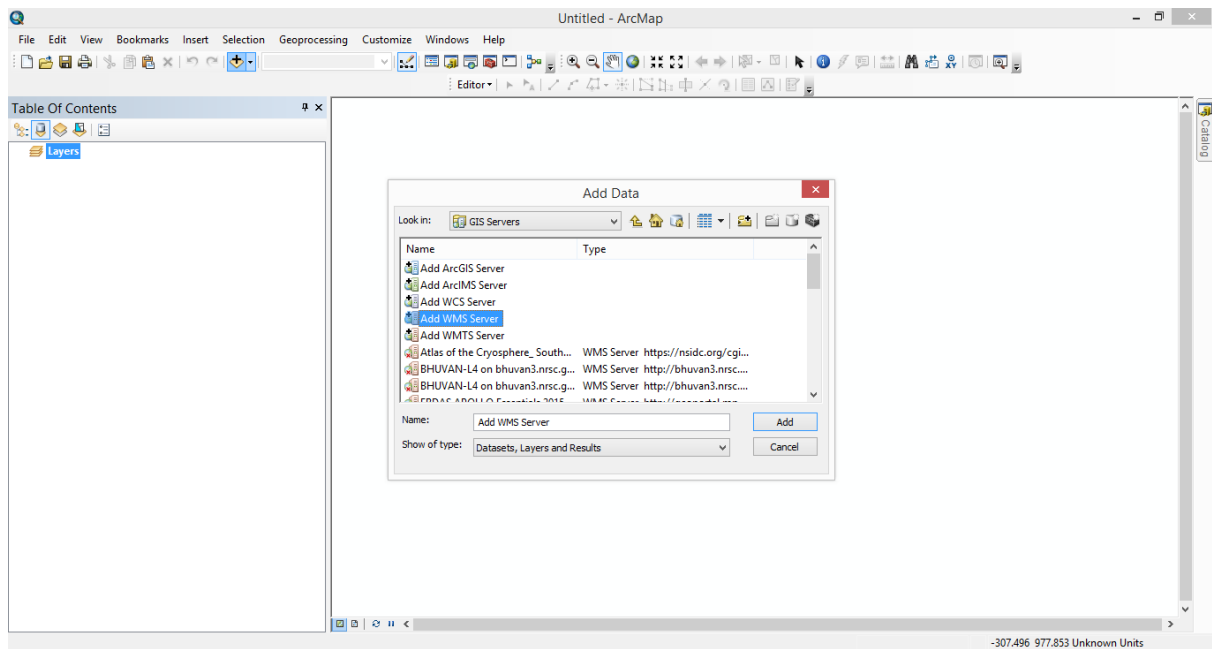
1. Step 1 - Open ArcMap
2. Step 2 – Right click on Layers and select data frame properties



3. Step 3 – Search “WGS_1984_Web_Mercator_Auxiliar” projection and projection and click apply & OK.

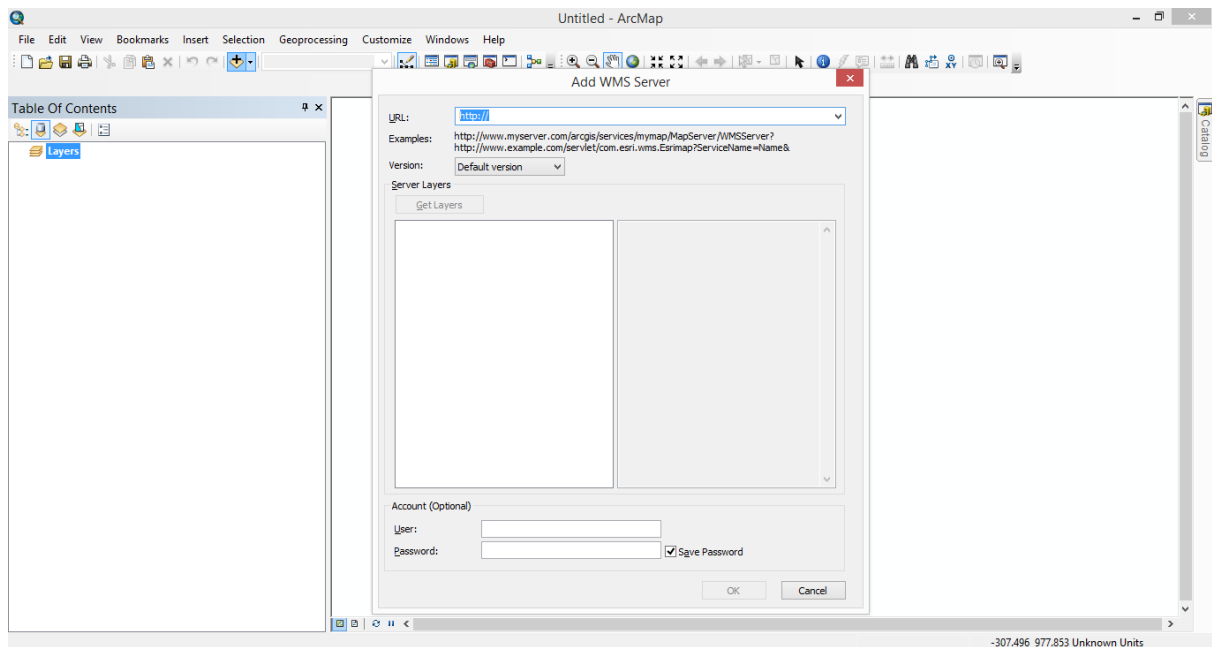


4. Step 4 - Click on GIS Service and double click on Add WMS Server.



Add WMS dialog window will open

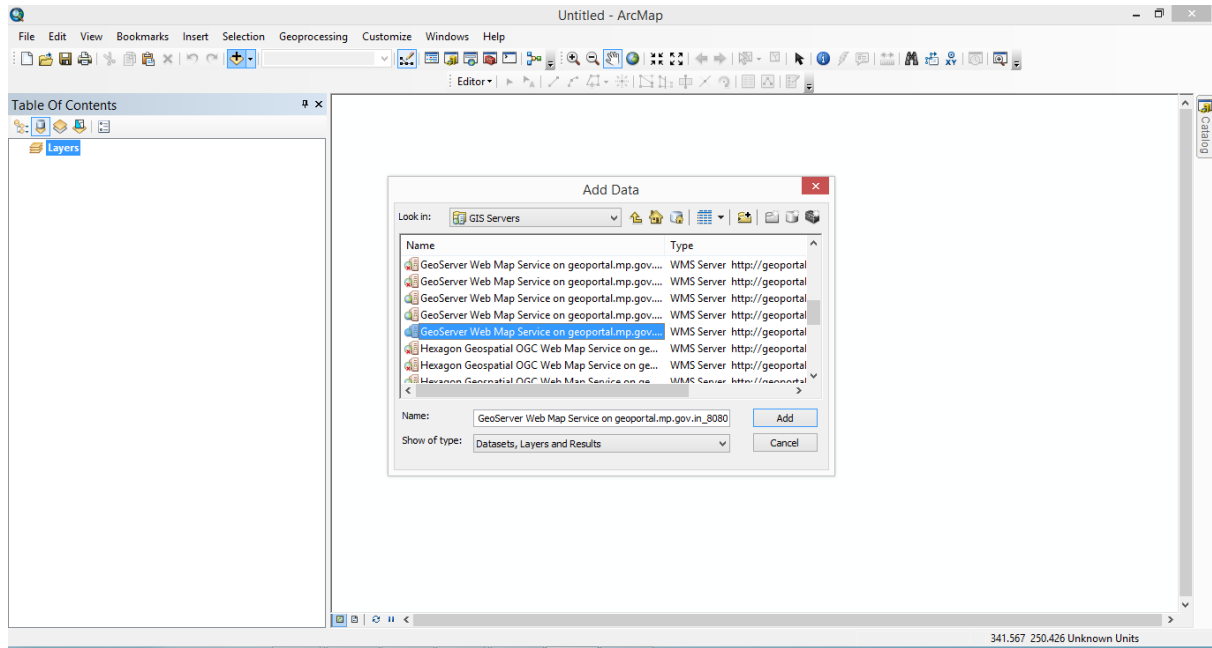
Step 5 – Paste WMS URL



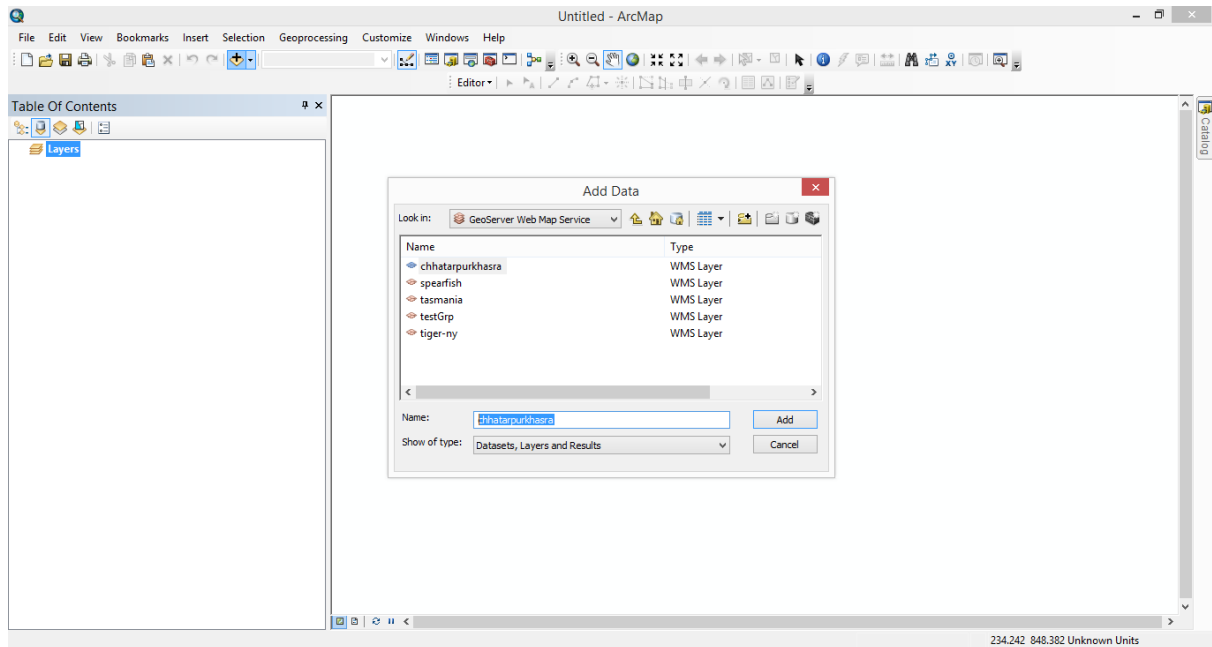
Step 6 – Click on Get Layer button.

Step 7– Click OK

Step 8 – Select WMS Service and double click



Step 9 - Click on khasra, village, block layer and click on Add



Step 10 – Zoom to below 1:20000 scale and check the data.

