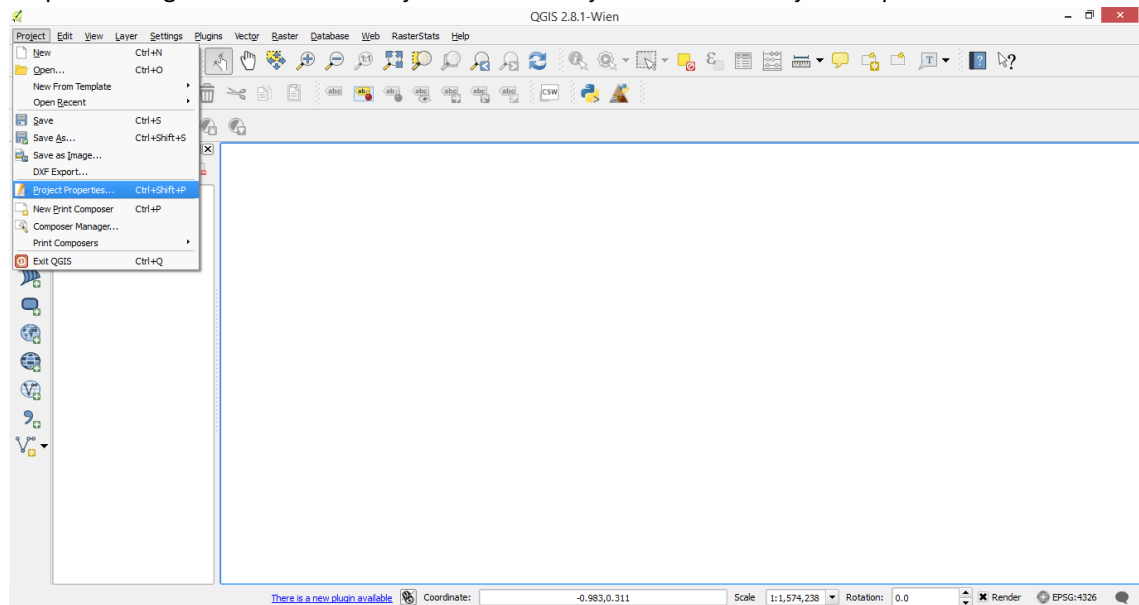
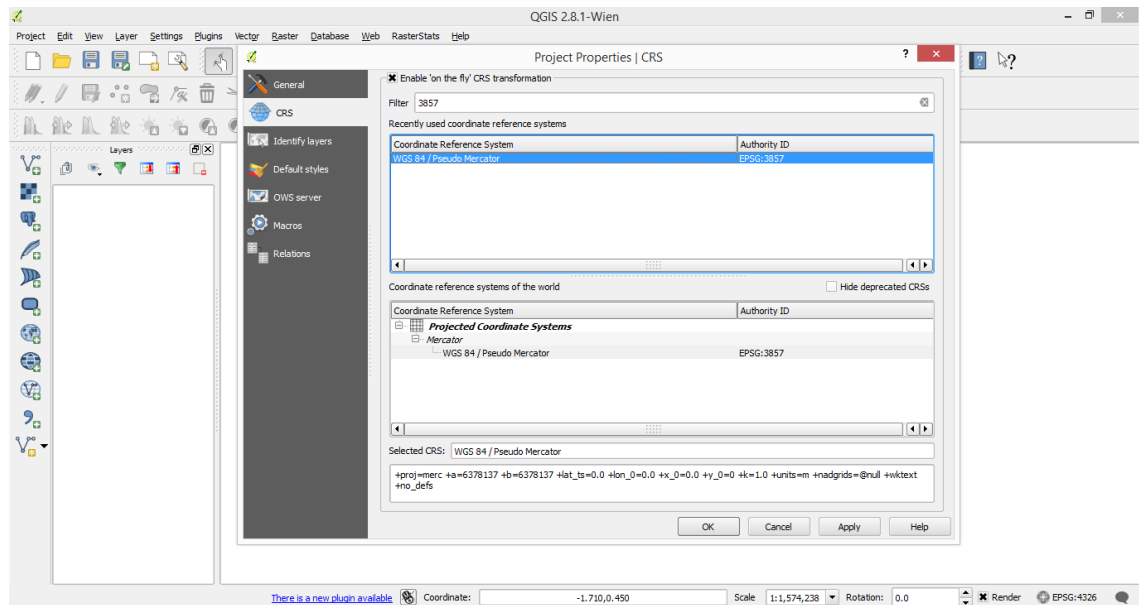


Add WMS Service on QGIS Desktop

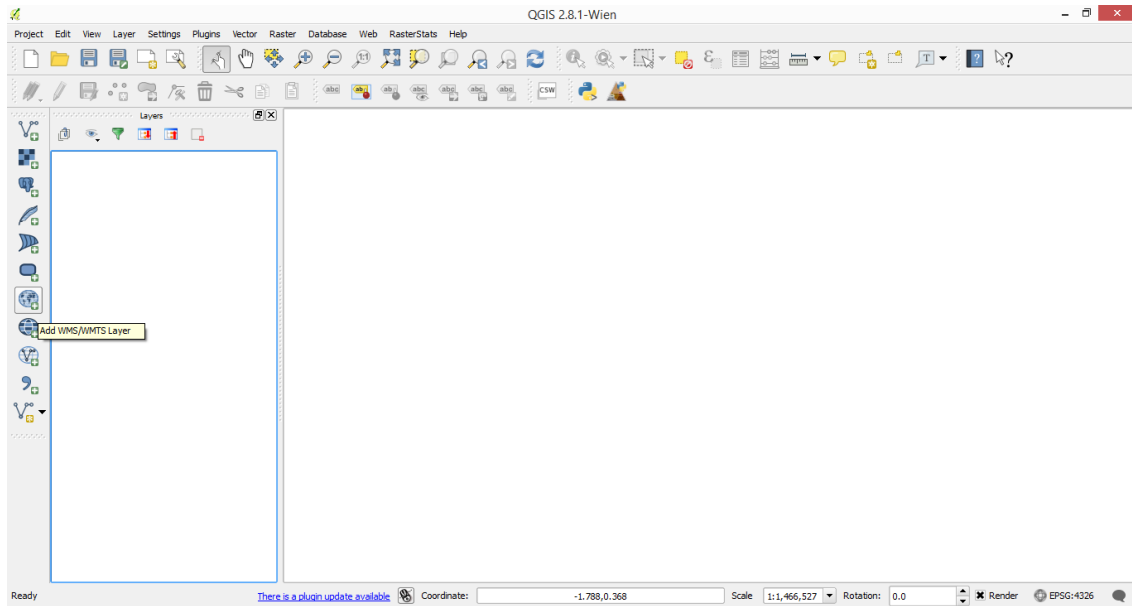
1. Step 1 - Open QGIS(ver. 2.8.1)
2. Step 2 – Change Current CRS of Project. Click on Project and select Project Properties.



3. Step 3 – Project Properties | CRS window open check Enable 'on the fly CRS Transformation' and filter 3857 code. Select EPSG:3857 CRS click apply and ok.

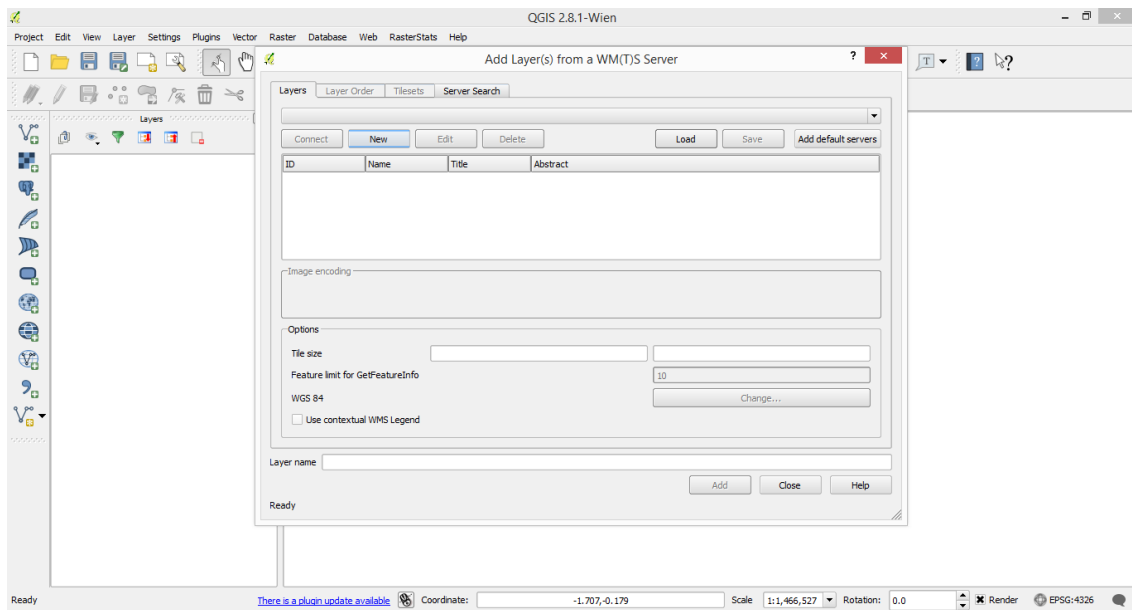


4. Step 4 - Click on Add WMS/WMTS Layer Button.



Add Layer(s) from MS(T)S Server dialog window will open

Step 5 - click on New

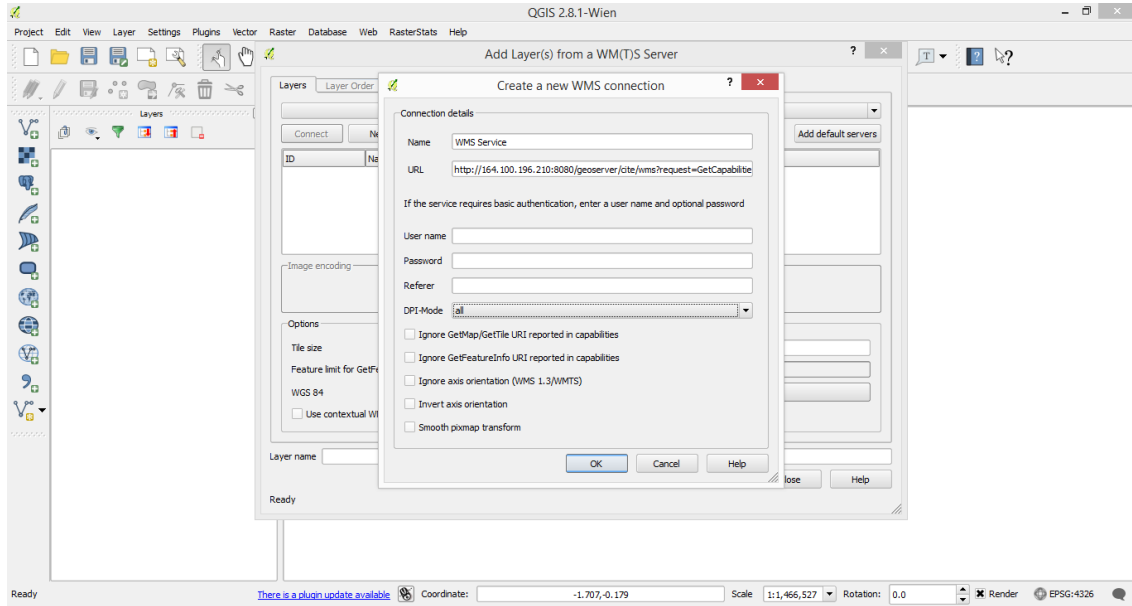


Create a new WMS Connection window will open

Step 6 - Type Server name

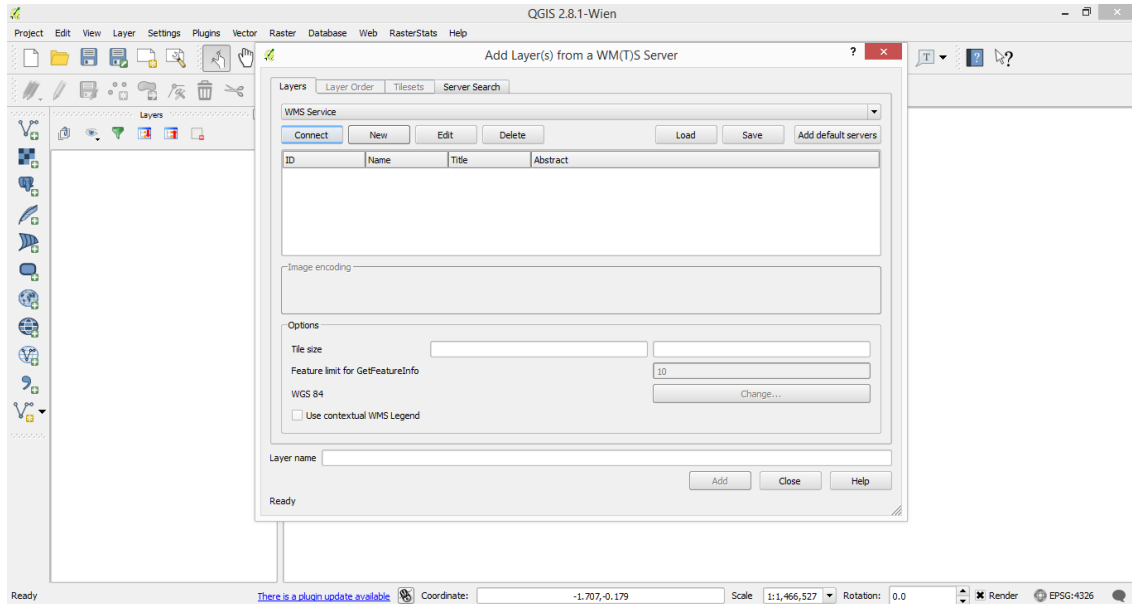
Step 7 – Copy the WMS Service URL provided by MAPIT

Step 8 - Click OK.



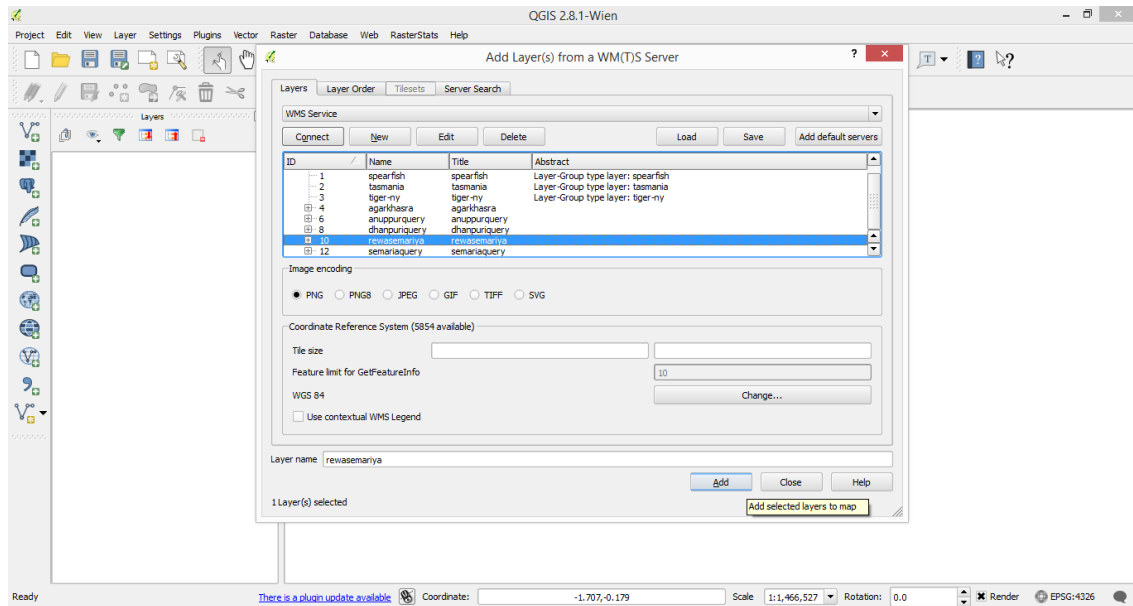
Below screen will appear

Step 9 - Click on Connect



Step 10 – Add layer

Select the Data Service Name for example- khasra/village/gp/district and click on Add button and close the button.



Step 11 – Zoom to below 1:20000 scale and check the data.

