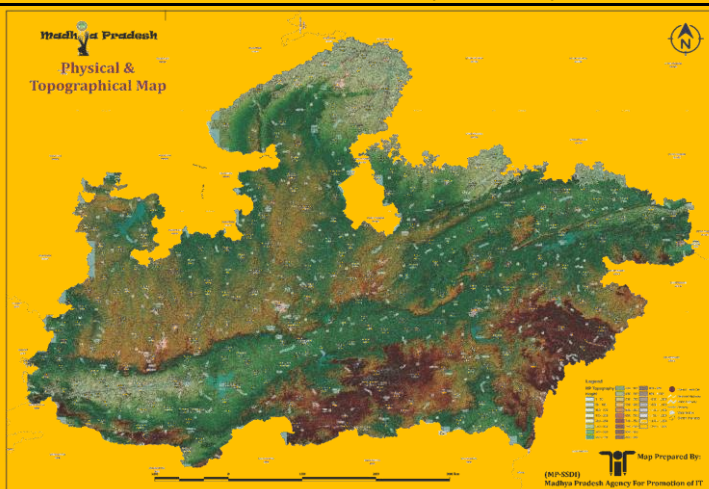


Metadata - Carto-DEM (DTM - 10m)



Sr. No.	Elements	Schema	Metadata Description of MPSSDI Topographical Data (Carto-DEM)
1	Identification Information	Name of the Dataset	Carto-DEM
		Name of the Data	Carto-DEM
		Theme	Pnchromatic (Elevation)
		Keywords	Carto-DEM
		Access Constraints	Catalogue Service
		Use Constraints	By-product of DEM can be utilized by Govt. department within state
2	Contact Information	Purpose of Creating Data	For different types of Topographical mapping, planning, relief analysis, slope analysis, aspect, Visibility analysis, Hydrological analysis, flood analysis etc.
		Data Type	DTM (Stereo data processing)
		Contact Person	OIC - GIS
		Organization	MPSEDC
		Mailing Address	mpssdi@mp.gov.in
		City/Locality	Bhopal
3	Spatial Domain	Country	India
		Contact	MPSSDI/MPSeDC
		Telephone Contact	755-2518300, 0755-2518702
		Fax Contact	91-755-2579824
		Email	mpssdi@mp.gov.in
		West Coordinate	74.029052 West
4	Citation	East Coordinate	82.806603 East
		North Coordinate	26.869466 North
		South Coordinate	21.070776 South
		Administrative Location	State of Madhya Pradesh
		Coverage	State of Madhya Pradesh
		Data Prepared by	ISRO/NRSC
5	Storage	Original Source	ISRO
		Source Scale and Date	NA
		Lineage (data's origins, what happens to it and where it moves over time)	ISRO/NRSC - MPSeDC - MPSSDI Repository
		Associated Project preparing the data	SIS-DP
		Associated Publications	NA
		Data Format	IMG
6	Attributes	Data File Size	10.6 GB (TIF)
		Data Physical Location (Computer + path)	\\10.115.175.2\mpssdi\Output_data\RasterData\DEM\CartoDEM_NRSC\StateMosaic10mGeoid4326
		Name of Attributes	Carto-DEM
7	Projection Information	Description of Attributes	OPTICAL (Stereo data processing)
		Properties of Attributes	10m GRID spacing
		Name of Projection	GCS-WGS84
		Unit	DD
8	Quick look	Projection Parameters	EPSG:4326
		Datum	EGM-96
		Name of the Satellite	Cartosat-1
		Sensor	Cartosat-1 (Stereo)
9	For Image Data	Path	516-559
		Row	94-102
		Sub Scene	NA
		Image Acquired From	11-01-2007
		Date and Time of Image	11-01-2007
		File Format	IMG
		Bits per Pixel (Signed)	16
		Spatial Resolution (grid spacing)	1/12 Arc-Second (10m)
		Spatial Resolution Unit	Arc-Second
		Number of Bands	1
		Number of Rows	64423
		Number of Cols	89756
Purchased or Obtained on Exchange Basis or collated	Purchased		