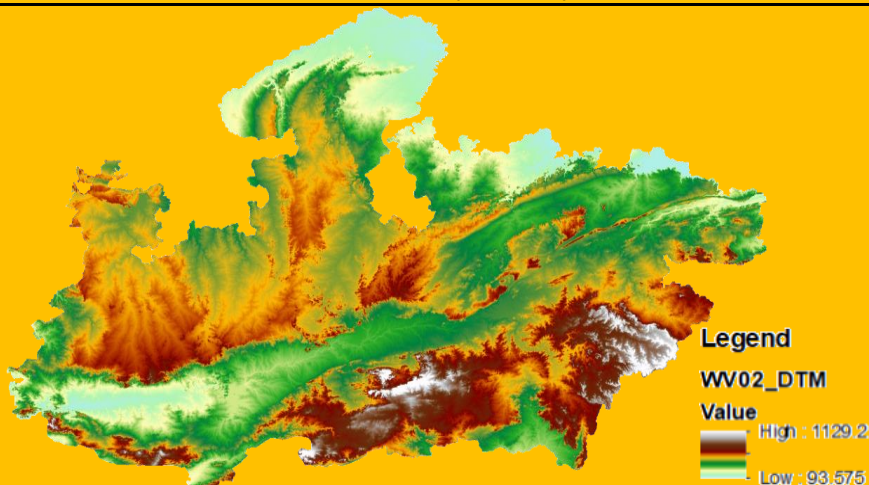


Metadata - WV02-DEM (DTM - 2m)



Sr. No.	Elements	Schema	Metadata Description of MPSSDI Topographical Data (Carto-DEM)
1	Identification Information	Name of the Dataset	WV02-DEM
		Name of the Data	WV02-DEM
		Theme	Grayscale (Elevation)
		Keywords	WV02-DEM
		Access Constraints	Catalogue Service
		Use Constraints	By-product of DEM can be utilized by Govt. department within state
		Purpose of Creating Data	For different types of Topographical mapping, planning, relief analysis, slope analysis, aspect, Visibility analysis, Hydrological analysis, flood analysis etc.
2	Contact Information	Data Type	DTM (Stereo data processing)
		Contact Person	OIC - GIS
		Organization	MPSEDC
		Mailing Address	mpssdi@mp.gov.in
		City/Locality	Bhopal
		Country	India
		Contact	MPSSDI/MPSeDC
Telephone Contact	755-2518300, 0755-2518702		
Fax Contact	91-755-2579824		
Email	mpssdi@mp.gov.in		
3	Spatial Domain	West Coordinate	74.029052 West
		East Coordinate	82.806603 East
		North Coordinate	26.869466 North
		South Coordinate	21.070776 South
		Administrative Location	State of Madhya Pradesh
		Coverage	State of Madhya Pradesh
4	Citation	Data Prepared by	Revenue
		Original Source	Digital-Globe
		Source Scale and Date	NA
		Lineage (data's origins, what happens to it and where it moves over time)	DigitalGlobe - ISRO/NRSC - Revenue - MPSeDC - MPSSDI Repository
		Associated Project preparing the data	DILR-MP
Associated Publications	NA		
5	Storage	Data Format	IMG/TIF
		Data File Size	548 GB (TIF)
		Data Physical Location (Computer + path)	\\10.115.175.2\mpssdi\Output_data\RasterData\DEM\WV-II_DEM
6	Attributes	Name of Attributes	WV02-DEM
		Description of Attributes	OPTICAL (Stereo data processing)
		Properties of Attributes	2m GRID spacing
7	Projection Information	Name of Projection	GCS-WGS84
		Unit	DD
		Projection Parameters	EPSG:4326
		Datum	EGM-96
8	Quick look	Graphic file in jpg format	
9	For Image Data	Name of the Satellite	WV02
		Sensor	WV02 (Stereo)
		Path	NA
		Row	NA
		Sub Scene	NA
		Image Acquired From	15-12-2015
		Date and Time of Image	15-12-2015
		File Format	IMG/TIF
		Bits per Pixel (Signed)	16
		Spatial Resolution (grid spacing)	1/14 Arc-Second (2m)
		Spatial Resolution Unit	Arc-Second
		Number of Bands	1
		Number of Rows	64423
Number of Cols	89756		
Purchased or Obtained on Exchange Basis or collated	Purchased		