

# **IGRS Project**

## **Location Boundary Demarcation based on Guideline Data (Rural / Urban) by using Web Applications**

### **User Manual**



**Madhya Pradesh Agency for Promotion of Information and Technology (MAP\_IT)**  
State IT Center, 47-A, Arera Hills, Bhopal, M.P. – 462011, Phone: +91-755-2518300, Fax: +91-755-2579824  
URL: [www.mapit.gov.in](http://www.mapit.gov.in), Email: [info@mapit.gov.in](mailto:info@mapit.gov.in)

---

## Table of Contents

1.	INTRODUCTION .....	3
2.	PURPOSE .....	3
3.	USER LOGIN MODULE.....	3
4.	MAPPING MODULE - SEARCH TOOL FOR DESIRED VILLAGE / WARD OF MULTIPLE GL RECORDS .....	4
5.	LOCATION BOUNDARY CREATION / DIGITIZATION .....	8
6.	BASIC TOOLS SUCH AS MEASUREMENT, ZOOM-IN, ZOOM-OUT NAVIGATION TOOLS ETC., .....	12
7.	LAYER PANEL LOADED WITH GL MAP FOR RURAL & URBAN, SATELLITE IMAGERY, MP ADMINISTRATIVE BOUNDARY LAYERS AND LANDMARKS ETC.....	13

## 1. Introduction

Department of Registration and Stamps, Government of Madhya Pradesh provides District wise Market Value Guidelines. SAMPADA application maintains the Market Value Guidelines which defines the property rates. The department of Registration and Stamps, is looking for GIS solution to create and maintain the GIS map for each Location based on the Guidelines rates.

## 2. Purpose

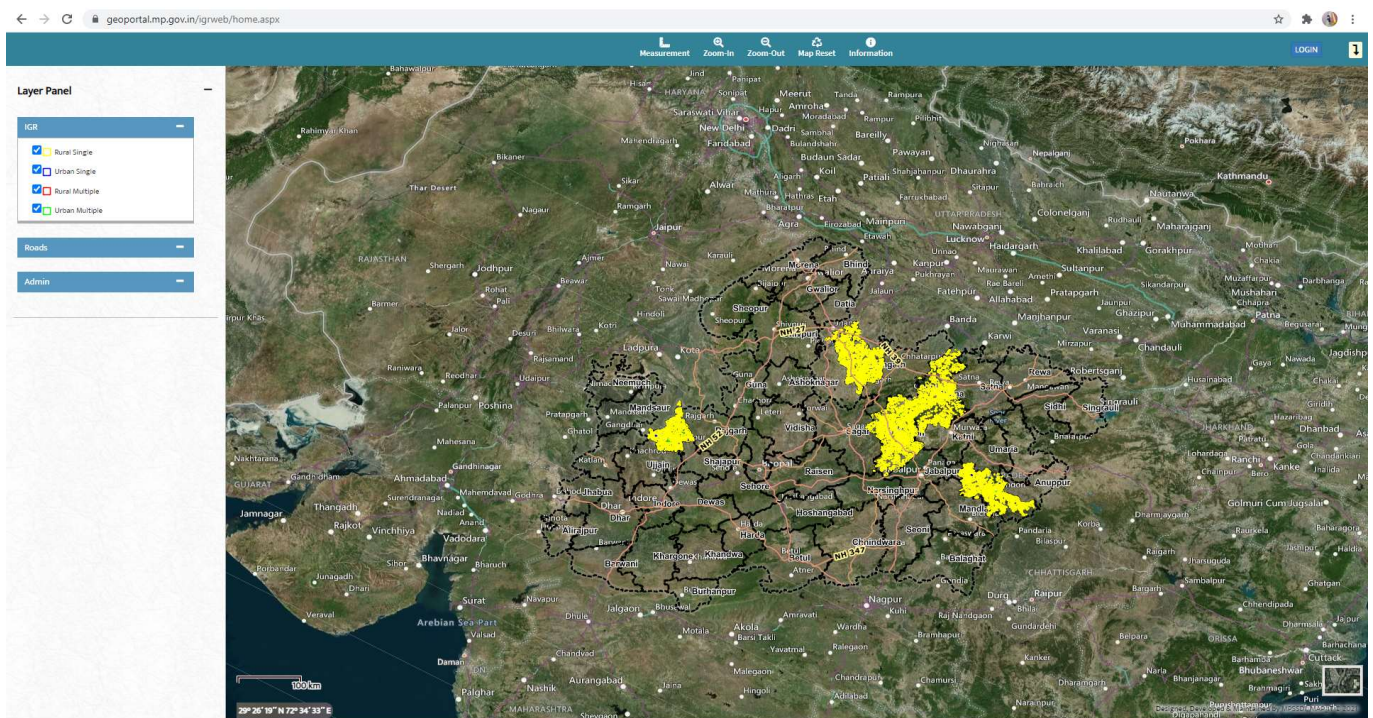
SAMPADA applications an extensive computerized system for registration and E-stamping of documents and maintains the Market Value Guidelines which further defines the property rates. The requirement of GIS solution will facilitate IGRS users in several ways such as for creation of Location boundary and controlling & regulating Guideline Location map along with rates and also evaluate rates year on year based on market demands and growth.

The web application enables IGRS department users to create Location boundary (GIS GL mapping) for whichever village / ward has multiple GL rate record.

## 3. User Login Module

Web portal can be accessed by using the below URL:

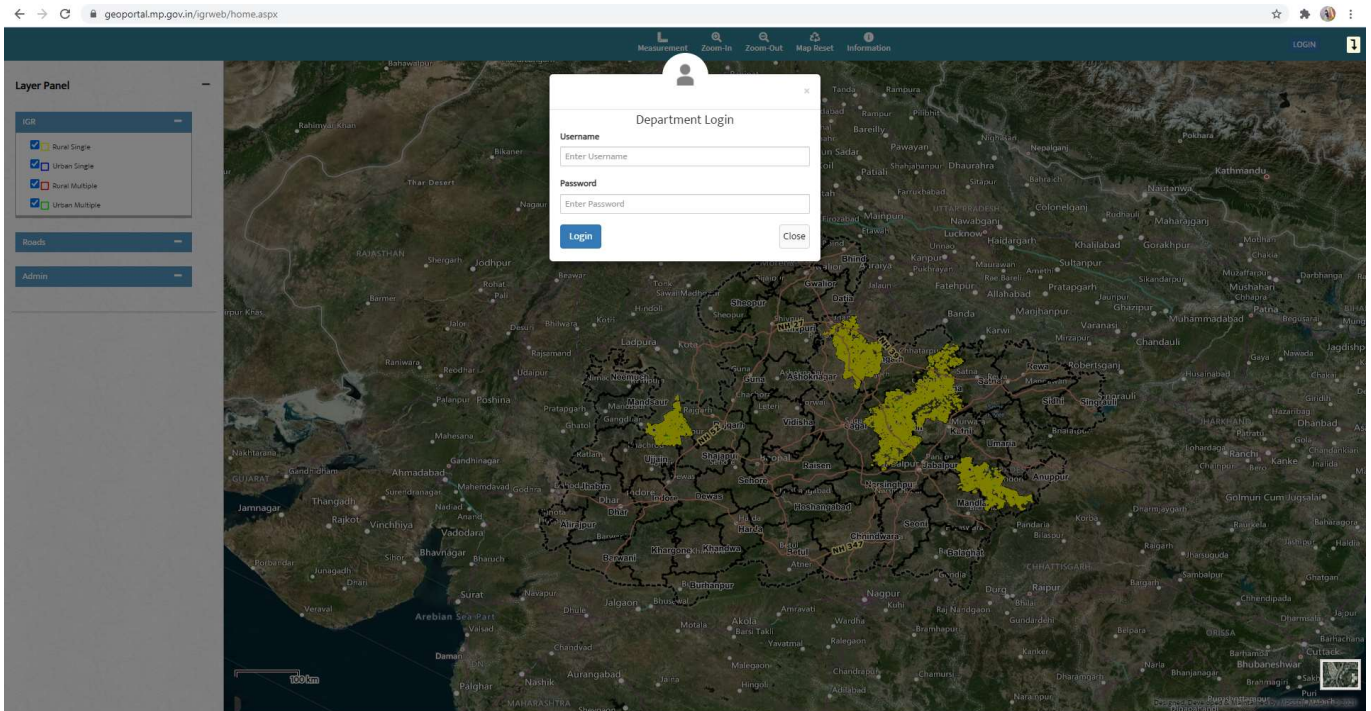
<https://geoportal.mp.gov.in/igrweb/home.aspx>



User can access the web application using authorized login credentials (Contact IGRS PMU team for credentials)

Enter the details on the login page

- Enter username
- Enter password
- Click on Login button

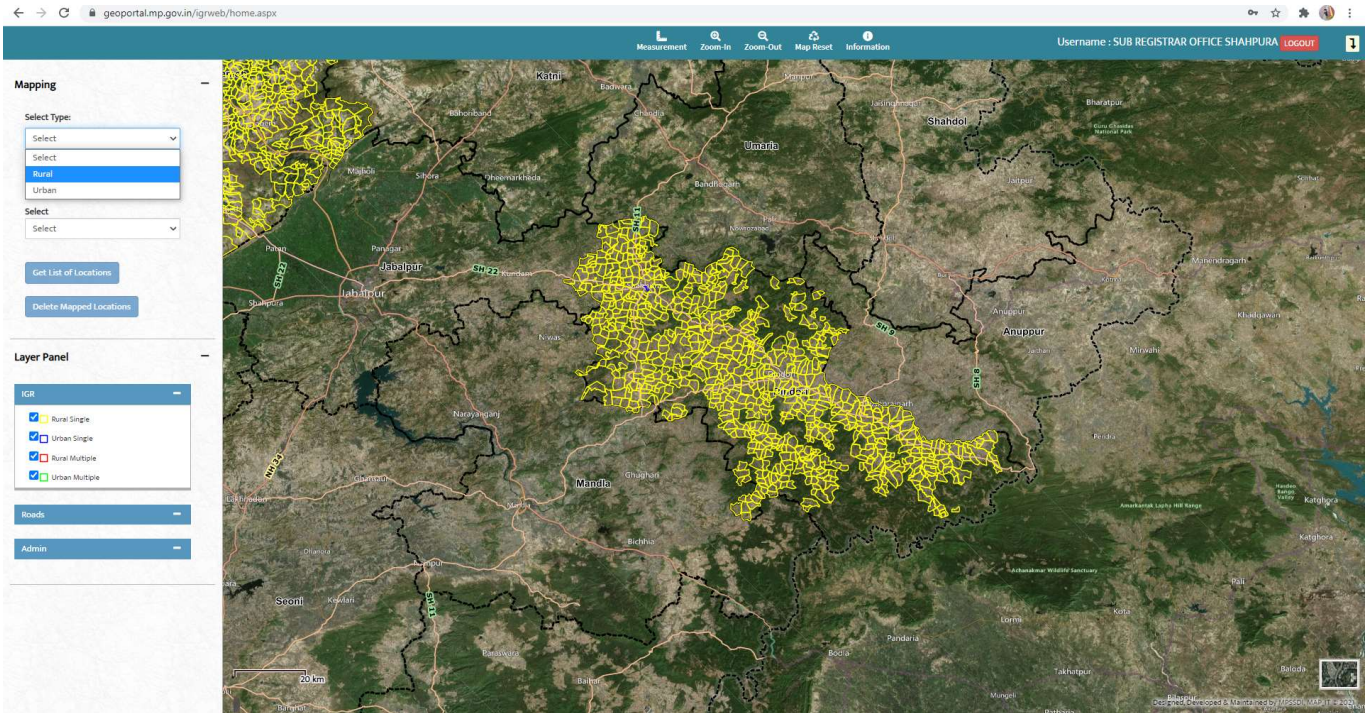


#### 4. Mapping Module - search tool for desired village / ward of multiple GL records

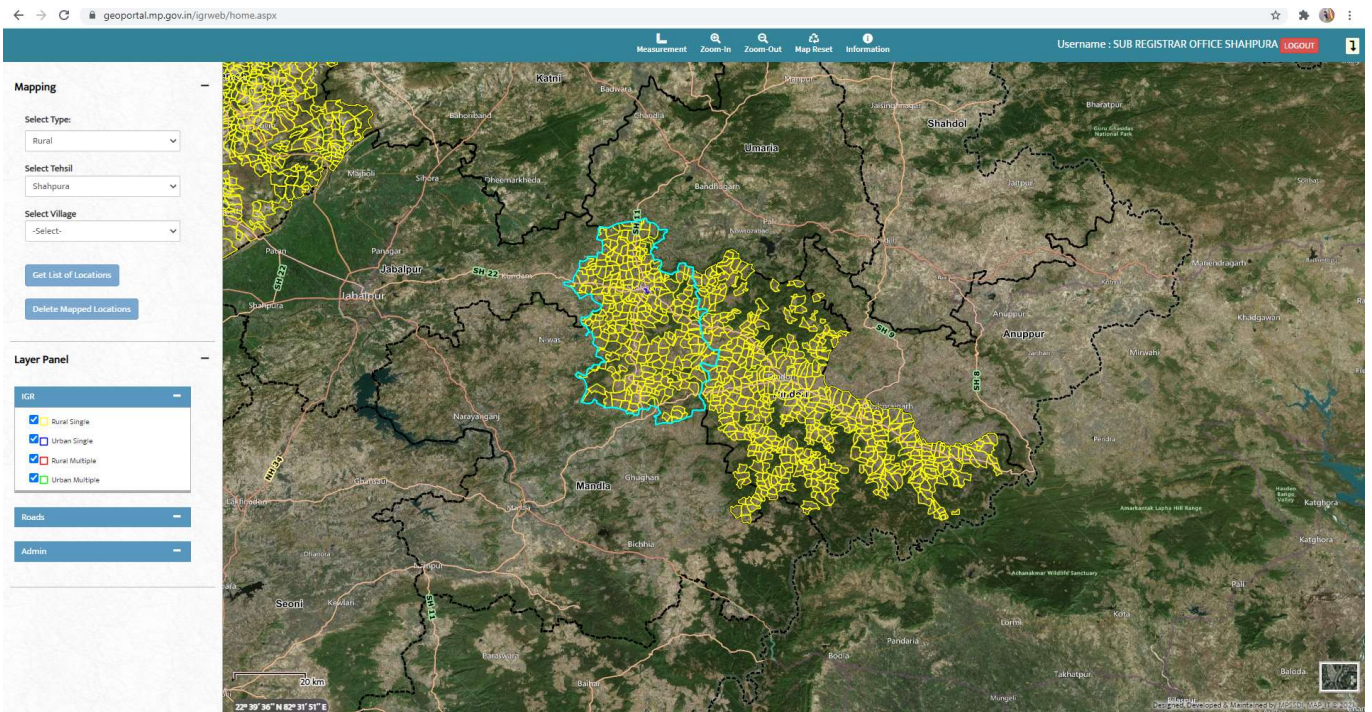
After successful login to the web portal by using authorized credentials, then user can expand the “Mapping” menu.

Enter the required details

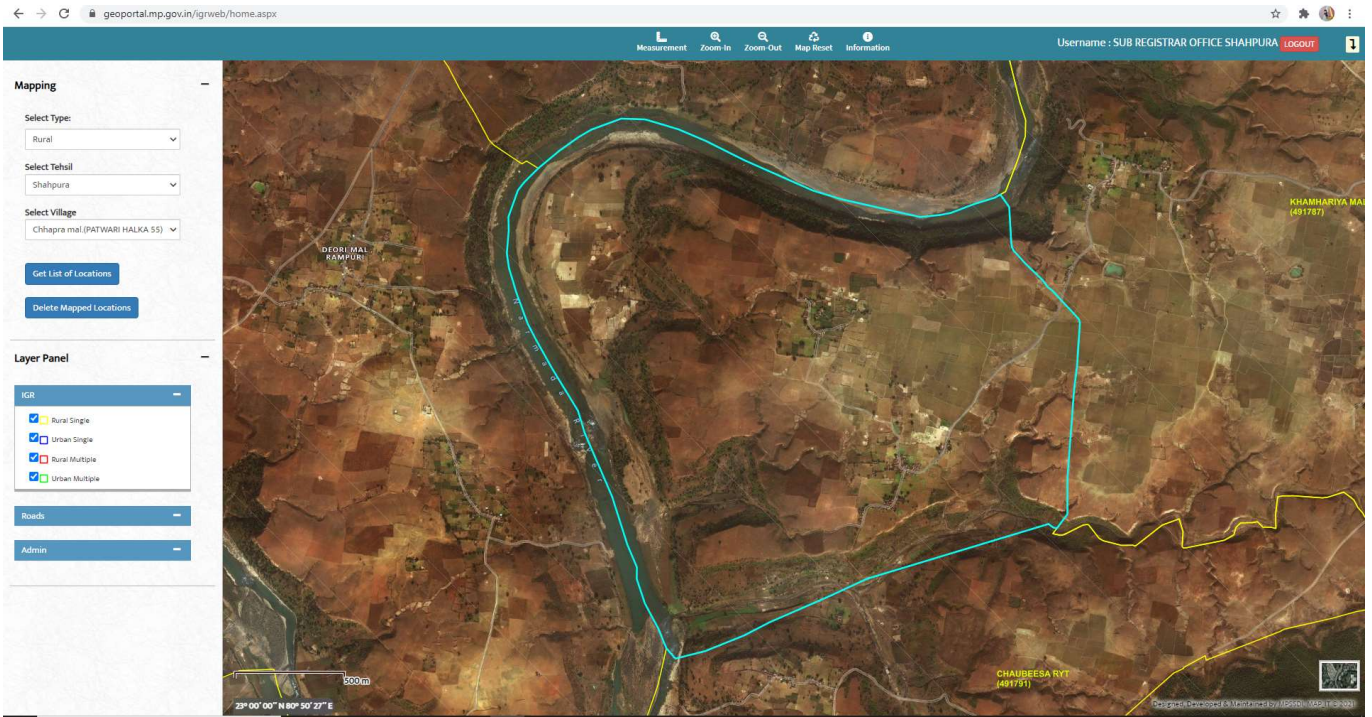
- Area Type (Rural or Urban) select from dropdown list
- Tehsil select from dropdown list



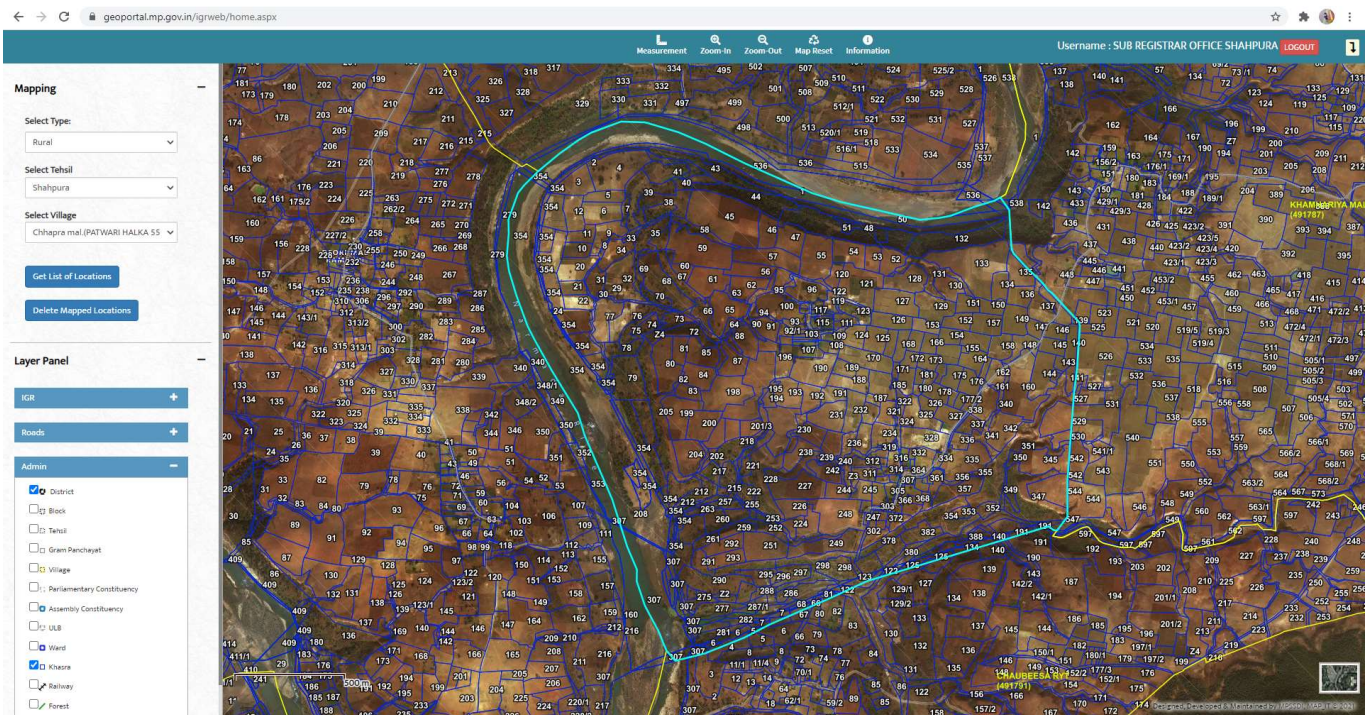
- By selecting the tehsil name example “Shahpura”, the map view screen will be navigated to the “Shahpura” tehsil boundary as shown in below screenshot.



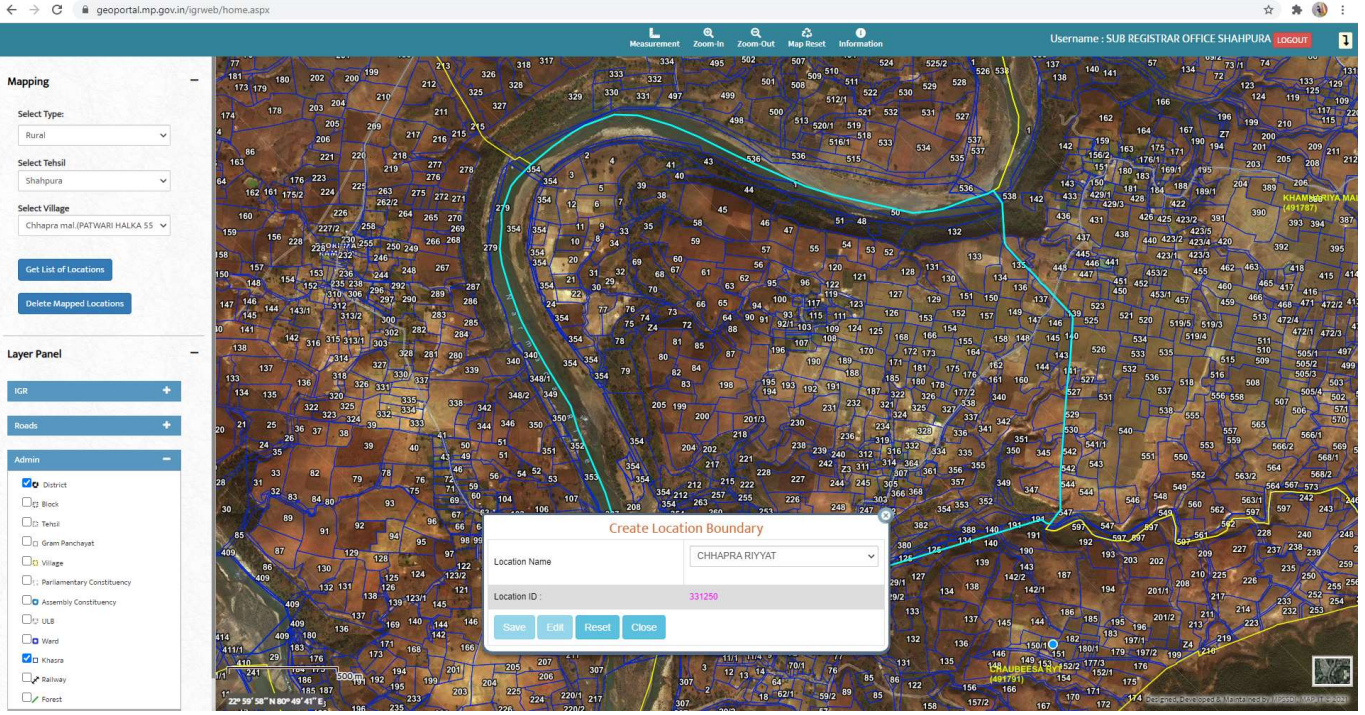
- Select village from the select village dropdown attribute list



- After selecting desired village, the map view screen will navigate and take you the centre of the map view with highlight of the respective village boundary as shown in the below screenshot.
- If required user can add Khasra parcel, MDR/ODR/PMGSY roads and Forest etc., layers for additional reference while digitization of Location boundary

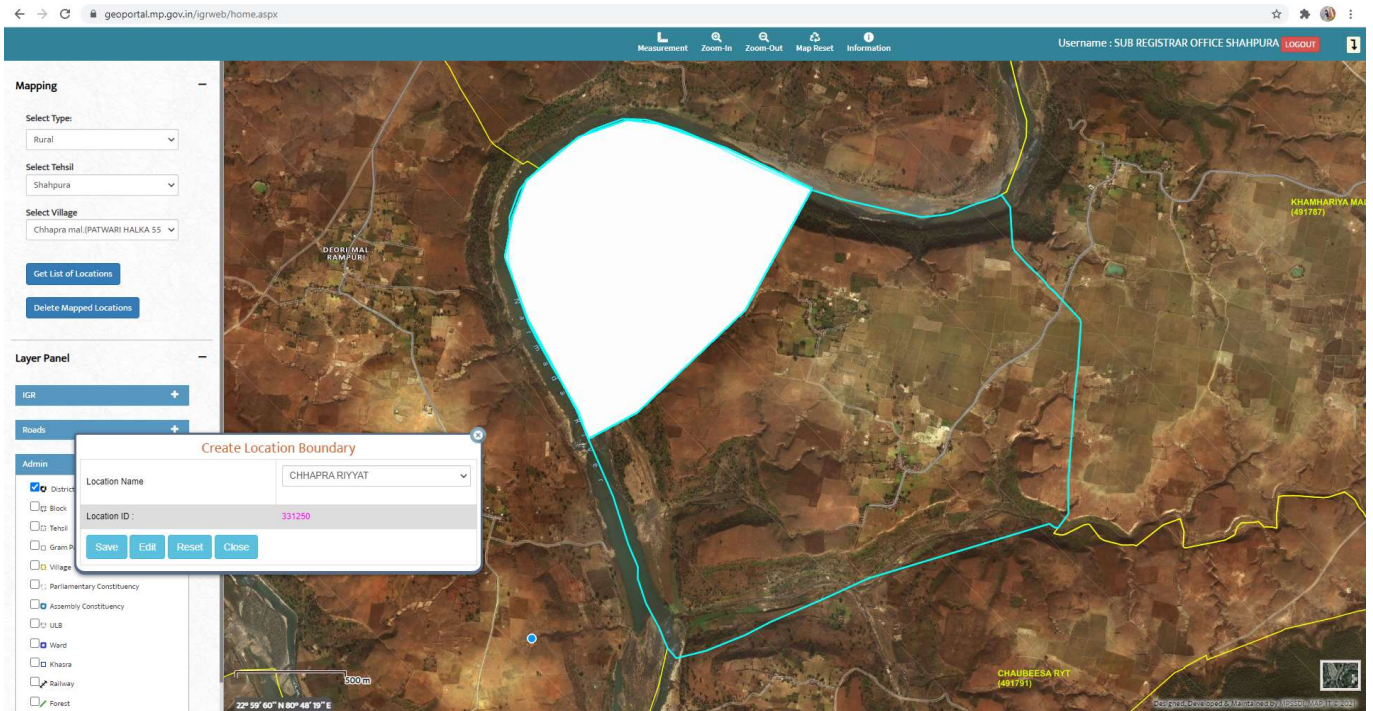


- Then press on the “Get List of Locations” button to view the respective Location name in a separate pop-up menu of “Create Location Boundary” as shown in the below screenshot



## 5. Location Boundary creation / digitization

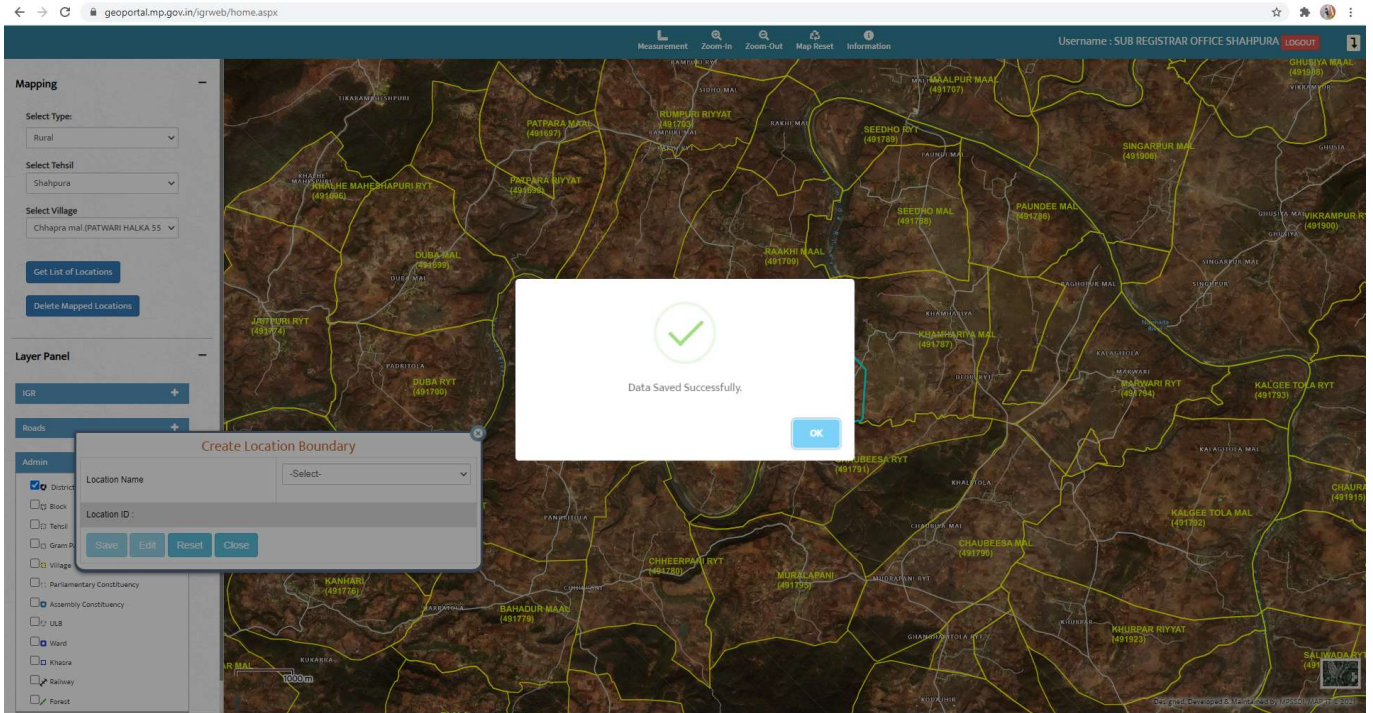
Then select desired Location name / guideline record to start digitization of that boundary with the help of freehand cursor and satellite imagery features. User can draw a polygon as per ground reality.



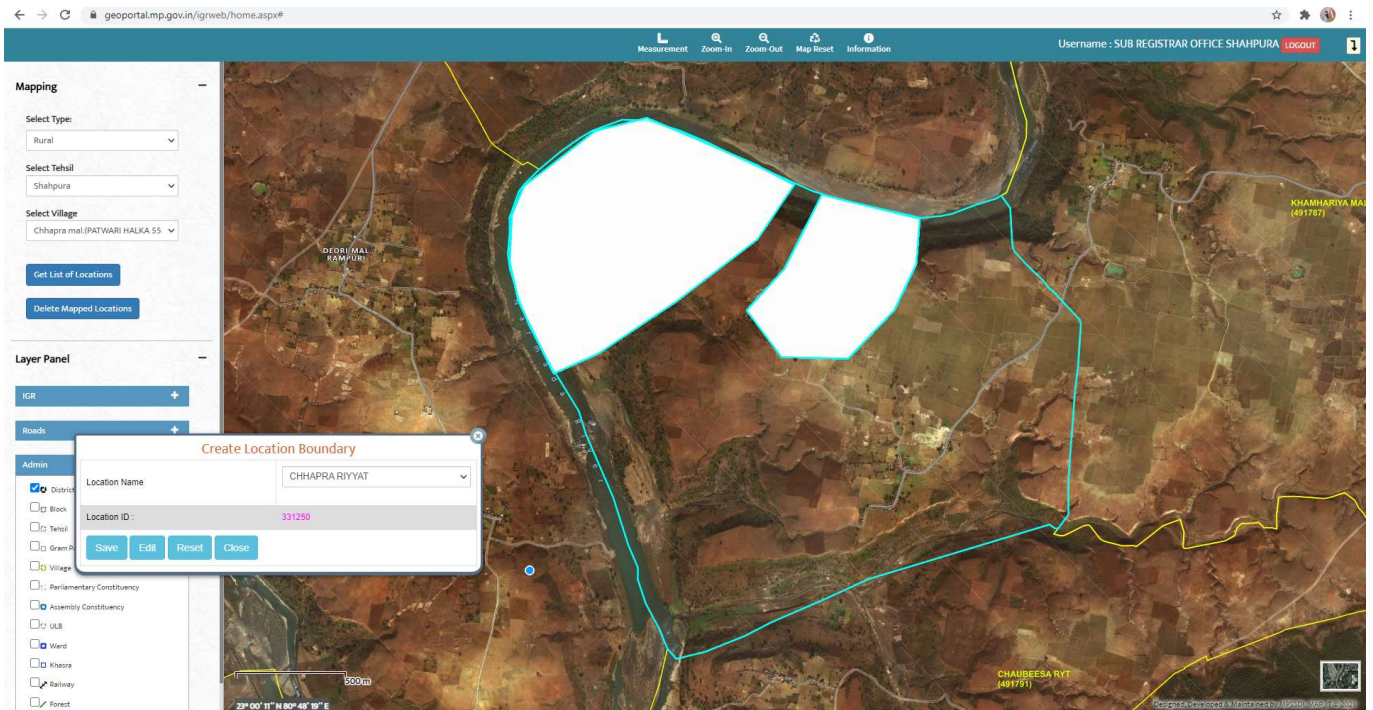
Once the boundary is demarcation / digitized as per area of the Location, if it is OK the Location boundary is appropriate to save, then user can click on the “save” button as shown in below screenshot, that Location boundary saved in the GIS database with respect to that Location name / id.

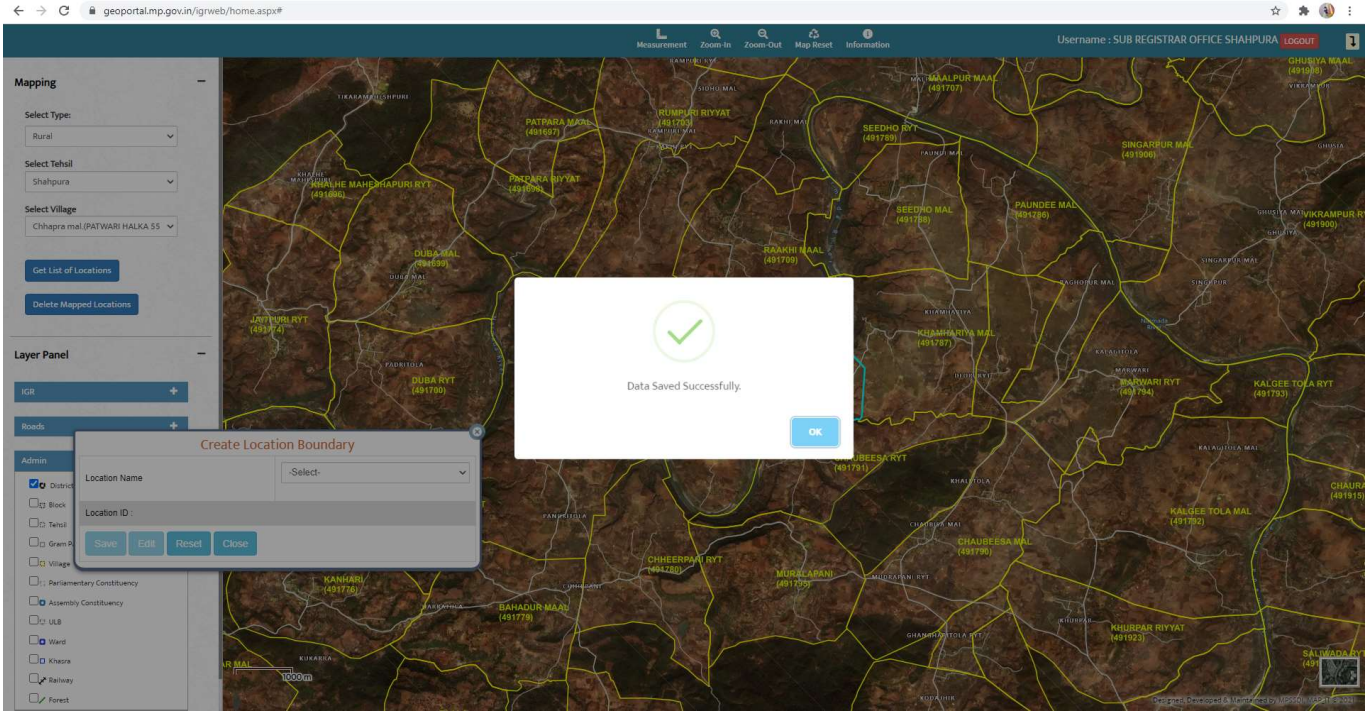
If user is not satisfied with the captured boundary, then user can click on the “Edit” button and can reshape modify the polygon as desired by picking of existing vertex grips or can create new vertices also if required to maintain smooth shape of the Location boundary.





- Then user can repeat the same process for the rest of locations in that particular village / ward
- And can adopt same procedure for other villages / wards also whichever village /ward has multiple Location / guideline records.
- Draw Multi part Location boundary -If any Location area is spreaded across two locations within the same village / ward, then user can capture first part of the Location boundary and complete the first polygon boundary without clicking “SAVE” button, then user has to capture second part of the Location boundary and then click “SAVE” button. So, the two polygons will be saved for one Location id. Refer to the below screenshot for more details

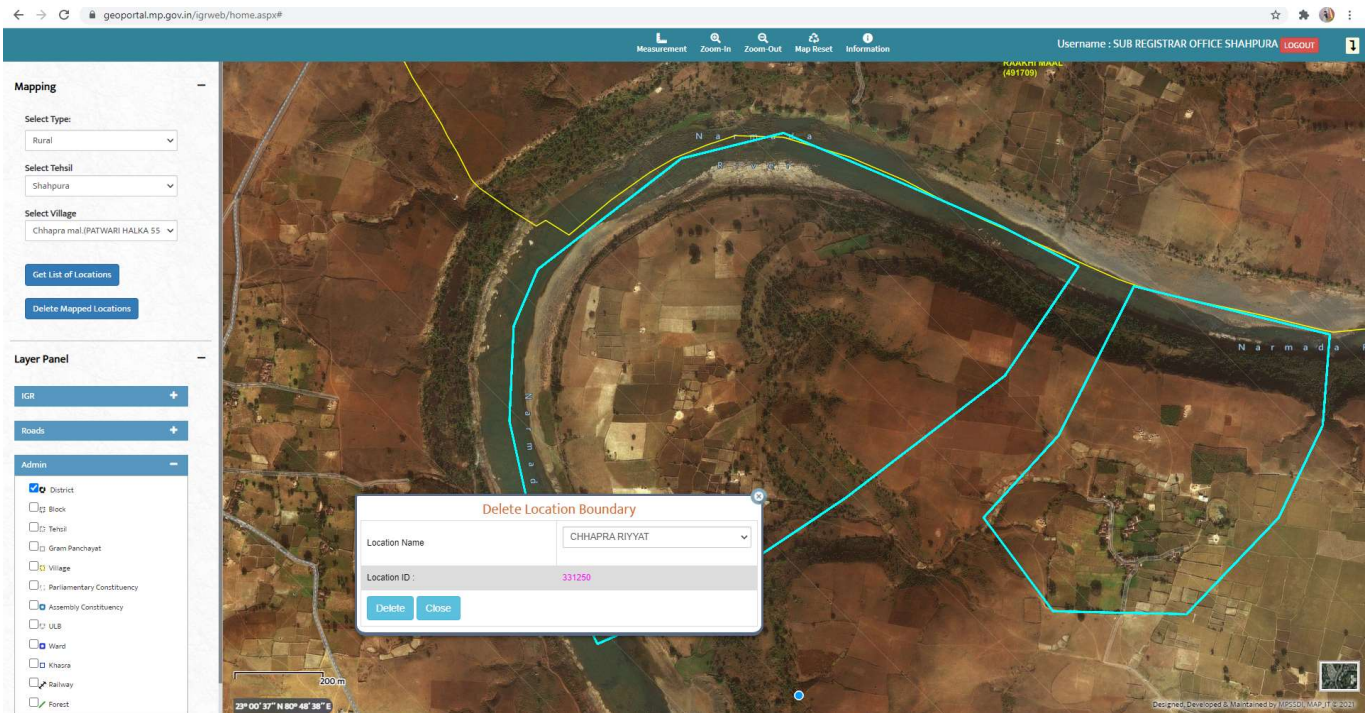




- The captured locations / digitized locations will be removed from the list and will always show only yet to capture locations in the dropdown list.
- Delete wrongly captured Location boundaries – if any case user could have digitized Location boundary and saved, after some time user realised the captured Location boundary is wrong. So, user can delete that particular Location boundary from the drop-down list. Refer to the below screenshot for detailed procedure

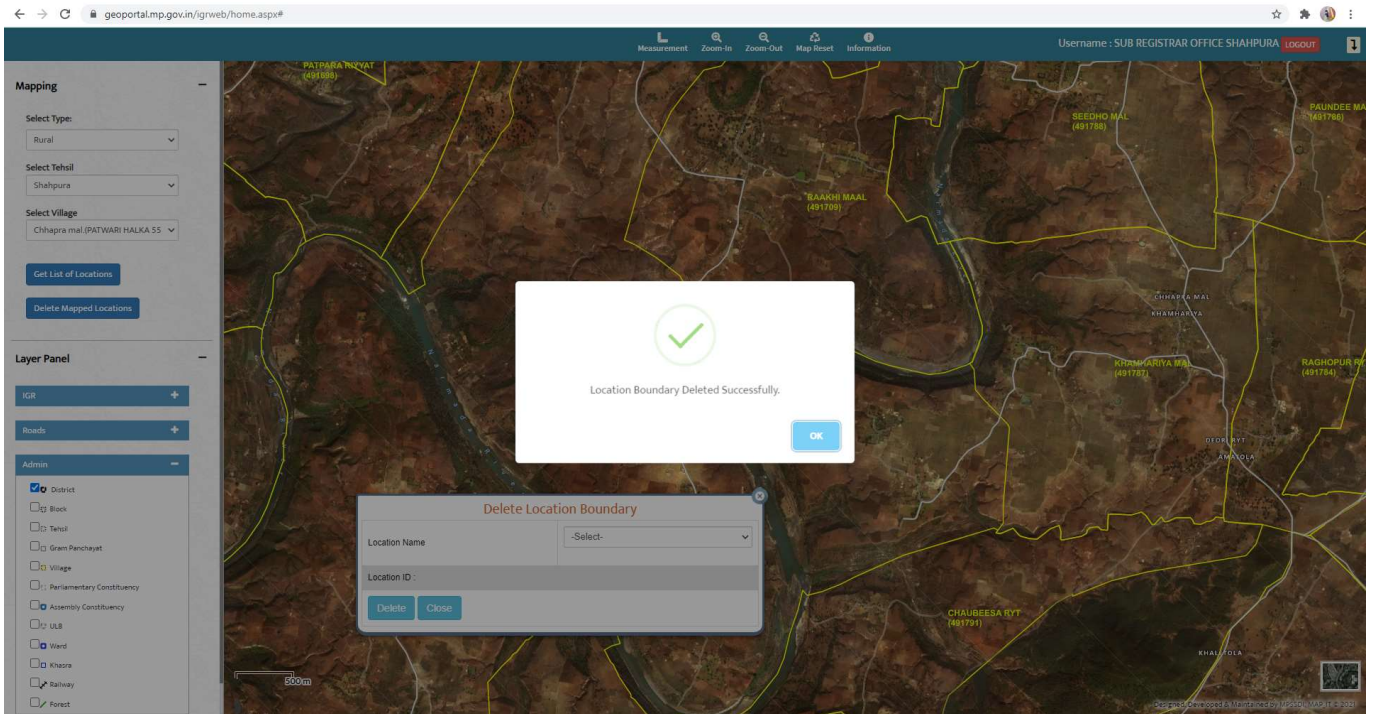
Step1 - Click on the “Delete Mapped Locations” button

Step 2 – Select the Location name from the dropdown list which user wants to delete.



Step3 – Click on “Delete” button- please make sure and delete wrongly captured Location only before deleting the Location.

Step 4 – “Location boundary deleted successfully”, message will be displayed on the screen.

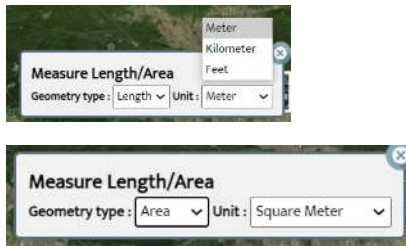


## 6. Basic tools such as measurement, zoom-in, zoom-out navigation tools etc.,

The basic tools provided for easy navigation of the map from one location to another desired location. These tool buttons are available at the top of the window as shown in the below screenshot.



- Measurement - user can measure length and area



- Zoom In – Increasing its overall size for greater detail. It also refer to magnifying the image on a screen.
- Zoom Out –To decrease rapidly the magnification of the image. To consider the essential points rather than the details of a subject. It works opposite of Zoom In functionality.
- Map Reset- To reset the map on default view.
- Information – User can view attribute information of selected Location.



## 7. Layer Panel loaded with GL map for rural & Urban, Satellite imagery, MP administrative boundary layers and landmarks etc.

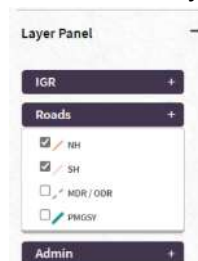
The left side vertical panel at the lower part the following items are available.

Layer Panel is the container of all required layers data in 3 sub-groups, the display of layers data can be on/off as per user requirements.

- IGR – there are four layers available with appropriate symbology colour for each layer
  - Location rural – it has the GIS map for all rural village single GL / Location records
  - Location urban - it has the GIS map for all urban ward single GL / Location records
  - New Location Rural – the new Location boundaries will be stored which are going to capture by user under rural villages
  - New Location Urban– the new Location boundaries will be stored which are going to capture by user under Urban wards



- Roads – there are 4 major road layers – NH / SH / MDR/ODR / PMGY



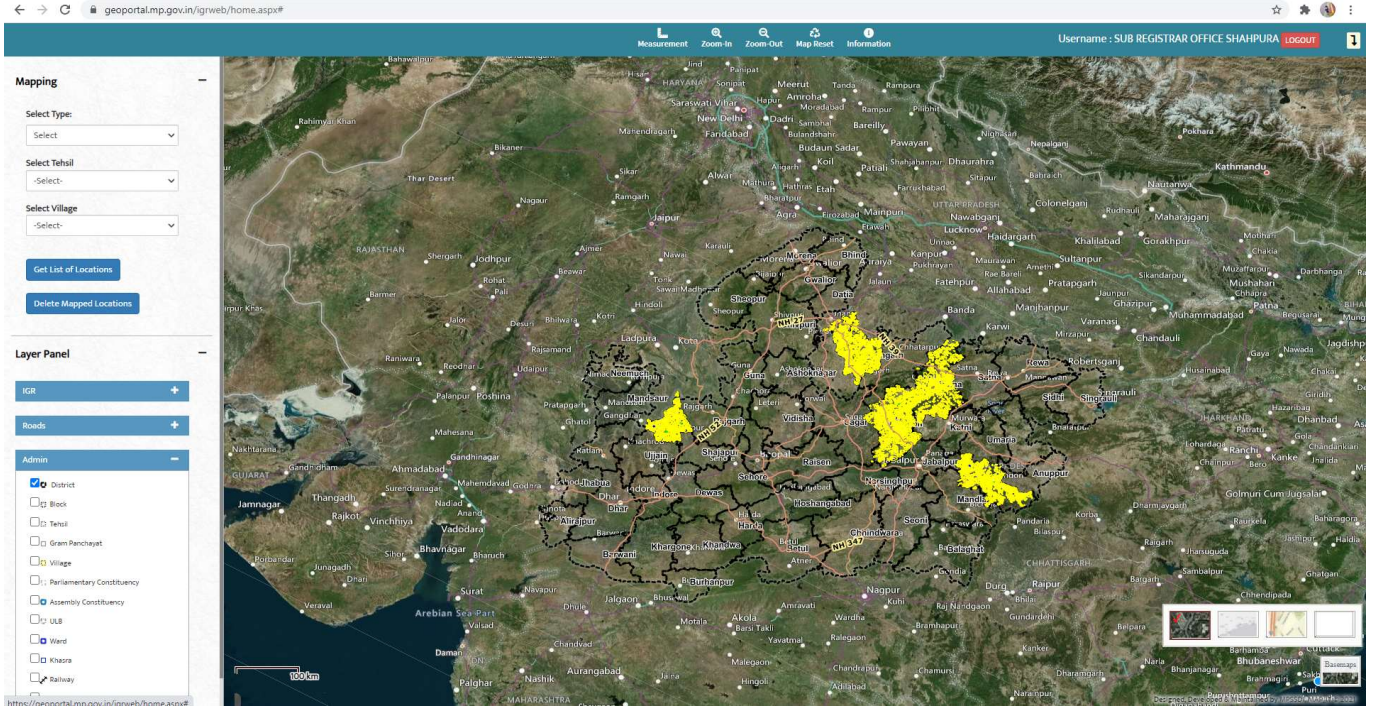
- Admin - 12 administrative boundary layers are available with appropriate Location symbology



- Dashboard & Reports

This module is under development, it may have summary reports and status for each district / rural / urban and work completion status etc.,

The user can toggle the Satellite Imagery or Base Map as per requirements, the blow screenshot as shown at lower left corner.



-----End of the Document-----